

HOW 2 UPGRADE WinQS® AUTOMATICALLY

From version 1900 we will no longer issue WinQS Upgrades as files that you need to download but have ADDED an automatic “Check for a WinQS Upgrade” from within WinQS.

We will however continue to send out email notifying you that an Upgrade to WinQS is available.

Once you have downloaded a small file that normally controls the WinQS Dongle Registration, called WinQSReg.Exe, you can check for a WinQS Upgrade from within WinQS using the menu option:

Help>Check for UpGrade

OR

Start>All Programs>WinQS-SQL>Register Dongle

& just select the new 5th button on the bottom of that form to Check for a new WinQS Upgrade.

(You MUST HAVE internet access to allow this to work & your WinQS dongle must be plugged in)

Once the automatic Upgrade is complete, your WinQS will be upgraded & ready for use.

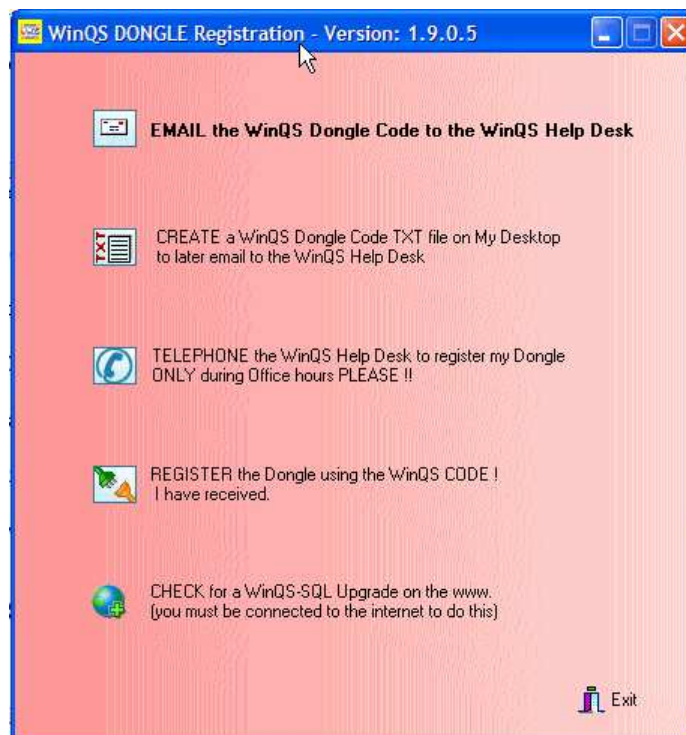
Any new WinQS ReadMe Documents & Help files will be installed etc.

All future WinQS Upgrades for will be issued in this quick easy manner BUT this UPGRADE will only work if:

1. WinQS has ALREADY been installed from ANY WinQS Installation CD

AND

2. The LATEST version of WinQSReg.Exe is downloaded AFTER installation from a WinQS CD prior to CD version 1925 as shown below:



If your version of the WinQS Dongle Registration program DOES not look like this, or the “Check for UpGrade” does not work, then you must download & install the latest WinQS Dongle Registration program from the WinQS website www.winQS.com/latest.asp link.

Once you have downloaded the new file [WQSRegv1925.Exe](#), and saved it into your 'Downloads' folder,

1. Double click on the file WQSRegv1925.Exe (to run it)
2. Click on the UNZIP button

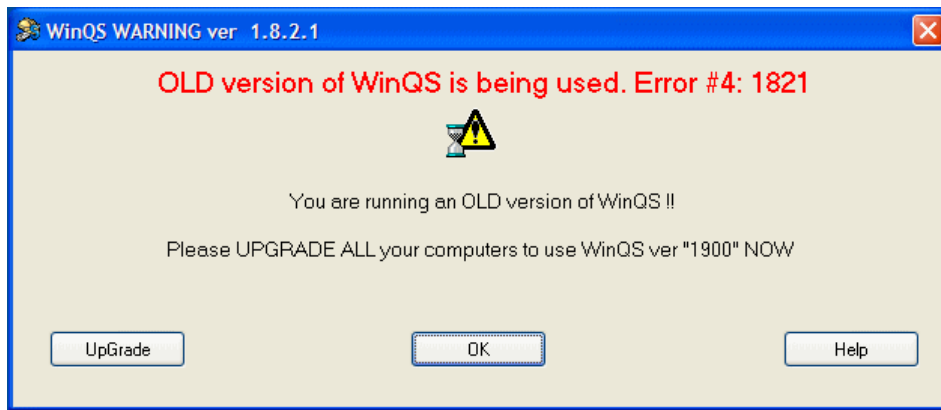
DO NOT CHANGE the 'Unzip to folder' option from C:\ unless your WinQS is installed on a different drive.

If your WinQS is installed in the D or E drive, then change this BUT only to D:\ or E:\ (just the drive letter)

3. You **MUST get a prompt to OVERWRITE** one file, and unless you get this warning, your WinQS is not installed properly & you should contact us.

That's all & you can check for the latest version of WinQS from within the WinQS program.

If when you OPEN WinQS on a version earlier than 1900, you may receive this WinQS message:



Using the 'UpGrade' button will **NOT** work with any version 1900 or less, but will display a web page.

Select the OK button on this form, and proceed to OPEN WinQS.

Then use the WinQS menu option to 'Check for UpGrade' as shown below:

